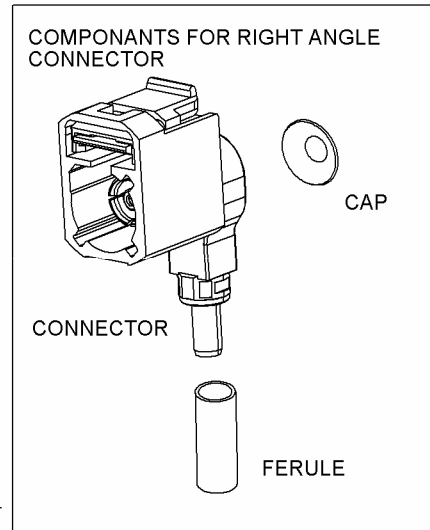
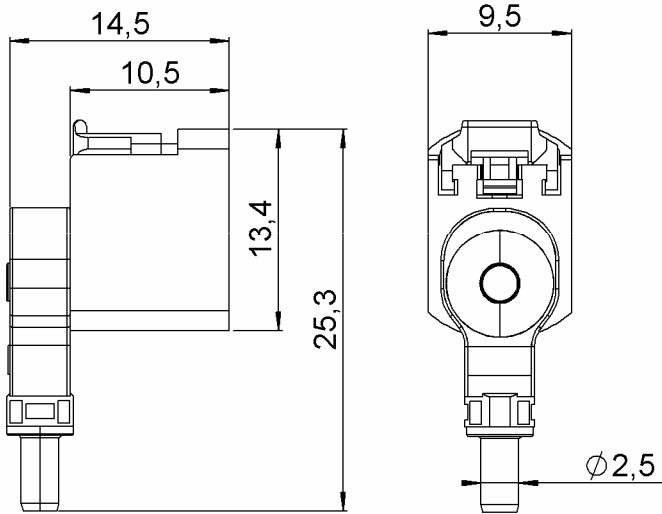


RIGHT ANGLE PLUG 360° ROTATABLE

R197.124._14

CABLE 2.6/50

Series : **SMB**
CARLOCK



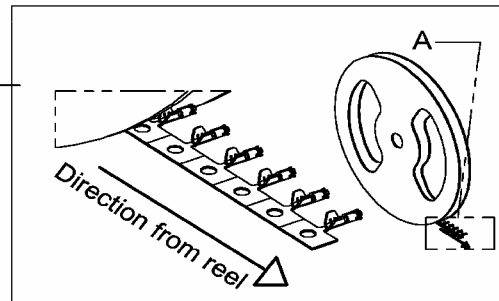
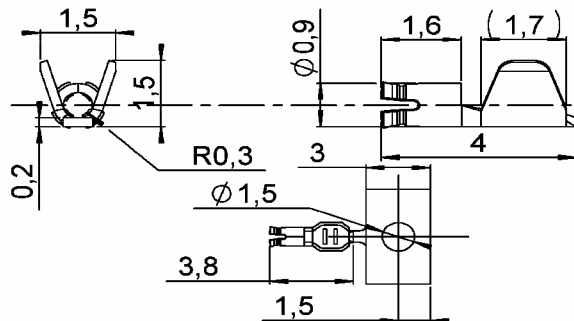
Stamped and formed center contact to be ordered and delivered separately

P/N : 250.01.402

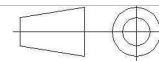
- Tape & reel packaging by 27500±2%
- Diameter of the reel: 630 mm
- Pitch between contacts: 5 mm
- Plating for contact area :Gold 0.3 over Nickel2
- Plating for crimp area :Sn 1 over Nickel 2

P/N : 250.01.422

- Tape & reel packaging by 1000
- Diameter of the reel: 140 mm
- Pitch between contacts: 5 mm
- Plating for contact area :Gold 0.3 over Nickel2
- Plating for crimp area :Sn 1 over Nickel 2



All dimensions are in mm.



COMPONENTS	MATERIALS	PLATING (µm)
BODY	ZINC ALLOY	NICKEL
CENTER CONTACT	BRONZE	SELECTIVE GOLD + SELECTIVE NICKEL
OUTER CONTACT	COPPER	NICKEL
INSULATOR	PTFE	
GASKET	-	
OTHERS PARTS	BRASS	NICKEL
-	-	
HOUSING	(POLYAMIDE)	UL CLASSIFICATION: UL 94 V-2 COLOR: SEE PAGE 6

Issue : 0813 A

In the effort to improve our products, we reserve the right to make changes judged to be necessary.



RIGHT ANGLE PLUG 360° ROTATABLE

R197.124._14

CABLE 2.6/50

Series : **SMB**
CARLOCK

PACKAGING

Standard	Unit	Other
1000	'W' option	Contact us

SPECIFICATION

ELECTRICAL CHARACTERISTICS

Impedance	50	Ω
Frequency	DC-6	GHz
VSWR	1.40* + 0,0000	x F(GHz) Maxi
Insertion loss	0.3*	\sqrt{F} (GHz) dB Maxi
RF leakage	- (- F(GHz)) dB Maxi
Voltage rating	335	Veff Maxi
Dielectric withstanding voltage	500	Veff mini
Insulation resistance	1000	M Ω mini

CABLE ASSEMBLY

Stripping	a	b	c	d	e	f
mm	2,00	6,50	15,5	0,00	13,5	0,00

Assembly instruction : **see page 3**

Recommended cable(s)
RG316 BLACK
RG 174

MECHANICAL CHARACTERISTICS

Center contact retention		
Axial force – Mating end		N mini
Axial force – Opposite end		N mini
Torque		N.cm mini

Characteristics indicated on this data sheet are those that can be achieved with the highest performance cable. Intrinsic limitations of the cable may diminish the performance of the assembly

Cable retention :

- Pull off	RG174	60 N mini
	RG316	110 N mini

TOOLING

Recommended torque		
Mating	NA	N.cm
Panel nut	NA	N.cm
Clamp nut	NA	N.cm
A/F clamp nut	0,0000	mm

Part Number	Description	Hexagon
.	.	.

OTHER CHARACTERISTICS

Mating life	25	Cycles mini
Weight	2.8	g

* AT 4GHz

ENVIRONMENTAL

Operating temperature	-40/+110	$^{\circ}$ C
Hermetic seal	NA	Atm.cm3/s
Panel leakage	NA	

Issue : **0813 A**

In the effort to improve our products, we reserve the right to make changes judged to be necessary.



RIGHT ANGLE PLUG 360° ROTATABLE

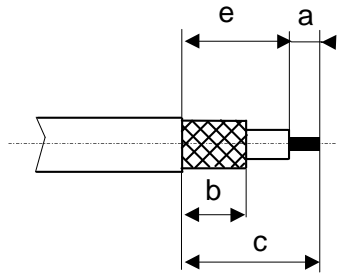
R197.124._14

CABLE 2.6/50

Series : **SMB**
CARLOCK

RECOMMENDED MOUNTING PROCEDURE

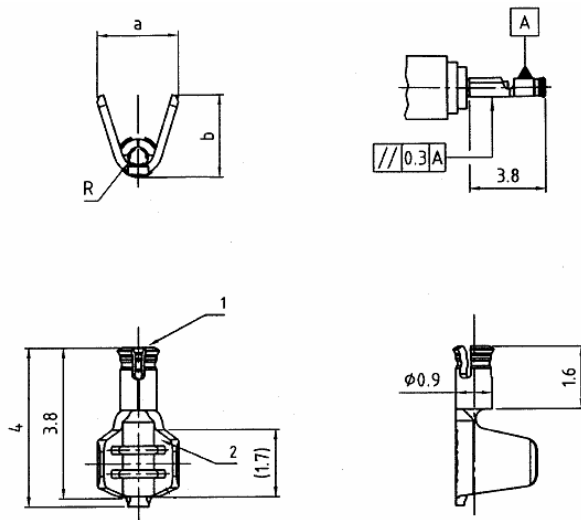
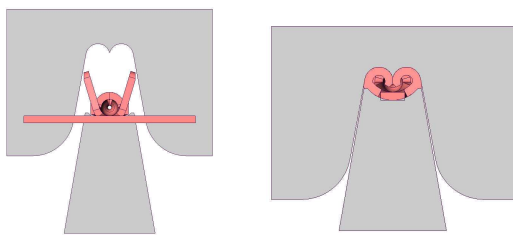
1



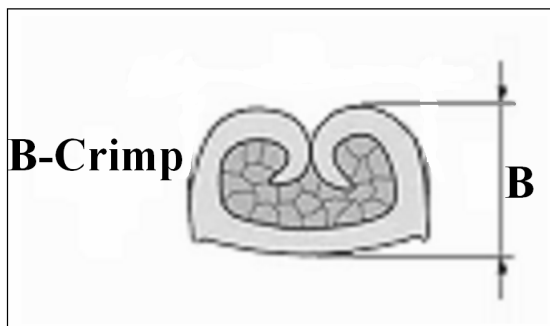
- Strip the cable

2

- Crimp the centre contact with crimping dies as described ,using mini applicator.



- Crimp the centre contact with crimping dies as described, using standard mini applicator .
- check the crimping height $B=0.68 \pm 0.03$ of the center contact.



Issue : 0813 A

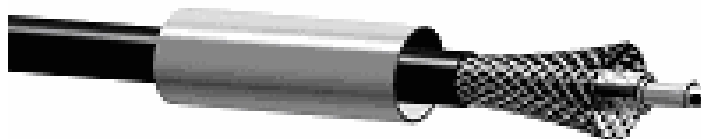
In the effort to improve our products, we reserve the right to make changes judged to be necessary.



RADIALL®

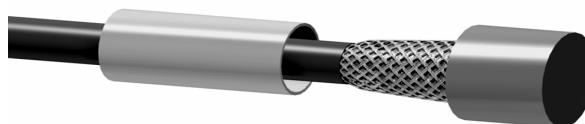
RIGHT ANGLE PLUG 360° ROTATABLE**R197.124._14****CABLE 2.6/50**Series : SMB
CARLOCK***RECOMMENDED MOUNTING PROCEDURE*****3**

- Slide the ferrule
- Fan the braid

**4**

- Insert gently the center contact into the insulator ;
Be cautious you must feel first a force detente corresponding to the center contact barb insertion, and a second force stage corresponding to the center contact reaching its final location. Do not apply an excessive force on the center.

- Hexagon for ferule crimping Hex. 3.30 ±0.05

**Issue : 0813 A**

In the effort to improve our products, we reserve the right to make changes judged to be necessary.

**RADIALL**®

RIGHT ANGLE PLUG 360° ROTATABLE

R197.124._14

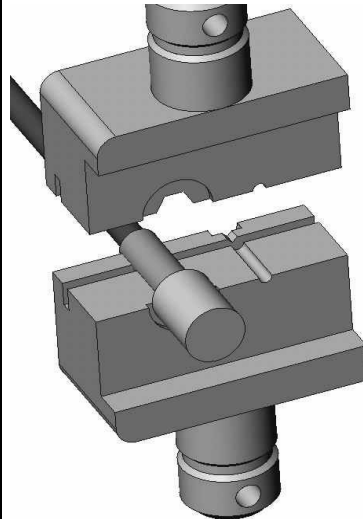
CABLE 2.6/50

Series : **SMB**
CARLOCK

RECOMMENDED MOUNTING PROCEDURE

5

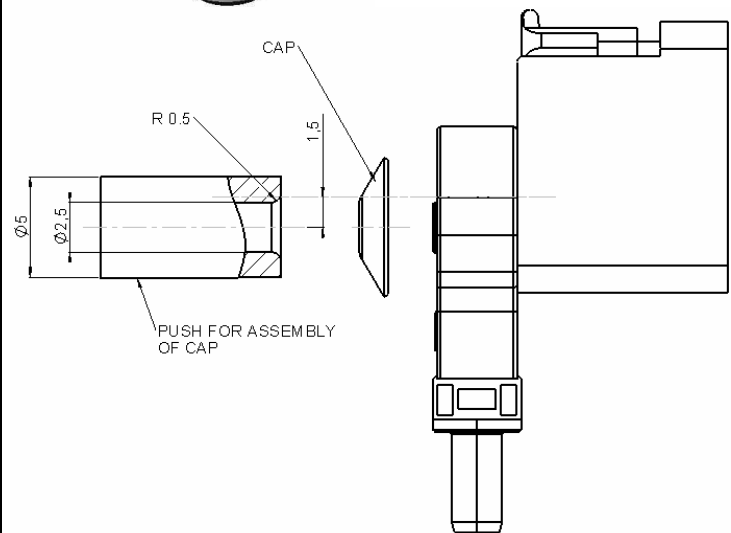
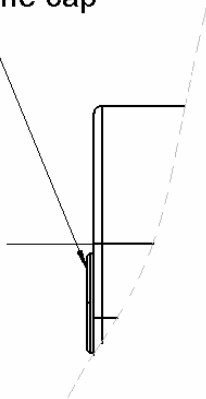
- Slide the ferrule over the braid
- Crimp the ferrule as shown on this picture with crimping tool



6

- Insert the cap
- And assemble it by using the punch

Camber of the cap
ca. 0.4mm



Issue : 0813 A

In the effort to improve our products, we reserve the right to make changes judged to be necessary.



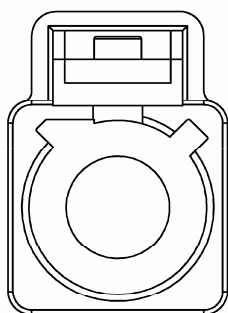
RADIALL®

RIGHT ANGLE PLUG 360° ROTATABLE

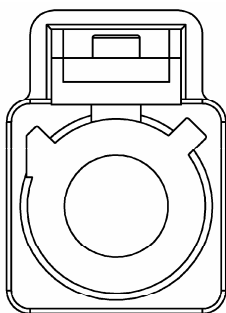
R197.124._14

Series : **SMB**
CARLOCK

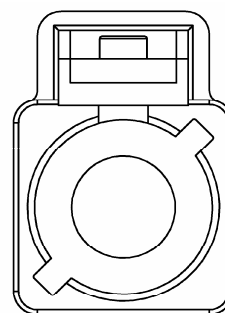
CABLE 2.6/50



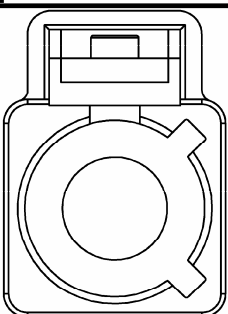
CODING A
COLOR BLACK
RAL 9005



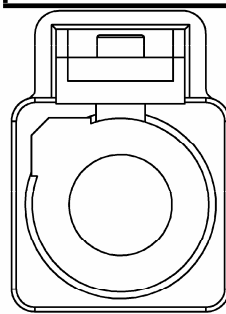
CODING B
COLOR CREME WHITE
RAL 9001



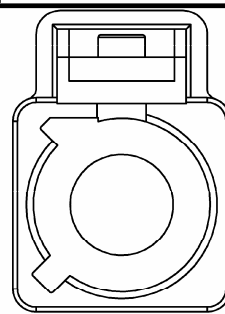
CODING C
COLOR BLUE
RAL 5005



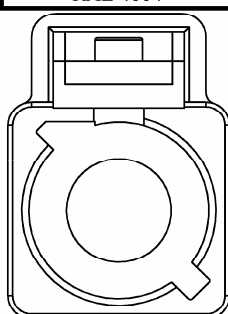
CODING D
COLOR BORDEAUX
VIOLET
RAL 4004



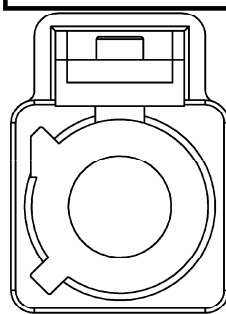
CODING E
COLOR GREEN
RAL 6002



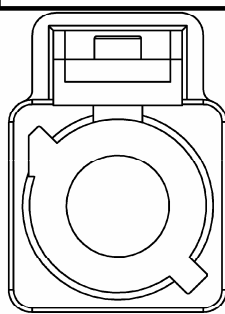
CODING F
COLOR BROWN
RAL 8011



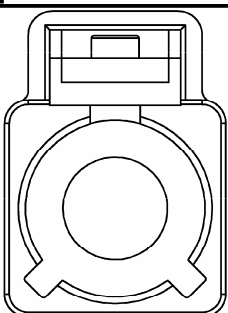
CODING G
COLOR GREY
RAL7031



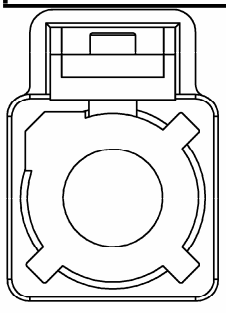
CODING H
COLOR VIOLET
RAL 4003



CODING I
COLOR BEIGE
RAL 1001



CODING K
COLOR CURRY
RAL 1027



CODING Z
COLOR WATER BLUE
RAL 5021

UL CLASSIFICATION
UL 94V-2

-To obtain the complete P/N please fill in the blank "_ " with the coding letter

Issue : 0813 A

In the effort to improve our products, we reserve the right to make changes judged to be necessary.

